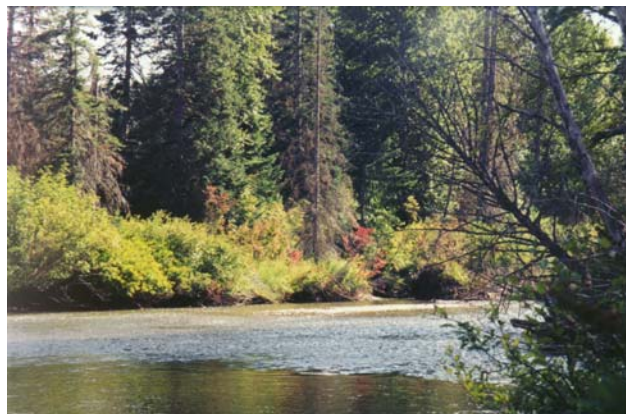




MOUNTAINS TO SOUND GREENWAY TRUST ANNUAL REPORT 2002-2003

THE LANDSCAPE: The Mountains to Sound Greenway is a scenic, 100-mile corridor of connected open spaces, trails, working farms and forests and historic towns along Interstate 90 from central Washington to Seattle. Just outside a major metropolitan area, this natural playground for recreation and wildlife could have easily become another strip city.

THE GREENWAY TRUST: Since 1991, the Mountains to Sound Greenway Trust has brought together a coalition of foresters, land managers, businesses, recreation groups and interested citizens to create a shared vision of a protected landscape. The Trust coordinated protection of over 125,000 acres of forests, farms and wilderness through public purchase or exchange. Regional trails are being connected so that someday a hiker or biker may travel, safely off-road, from the Seattle waterfront and head east all the way across the state. Volunteers are out every weekend in the Greenway planting trees, building trails, restoring damaged natural areas and removing eroding logging roads in the Cascade Mountains.



New public land along the Yakima River

2002 – 2003 LANDS

- 171 acres acquired on Mt. Si by the Washington State Department of Natural Resources
- Over 1700 acres acquired in the Raging River Valley by King County
- 77 acres acquired at Taylor Mountain Forest by King County
- Preston Edge acquisition of 7 acres
- 400 acres acquired by the City of Issaquah as part of the new Talus development on Cougar Mountain
- 20 acres acquired in the Middle Fork of the Snoqualmie River Valley by King County
- North Bend riverfront acquisition of 40 acres for a King County boat launch
- 800 acres acquired in the Lake Easton area
- 950 acres acquired near the Yakima River
- Publication of maps detailing 81 separate land acquisitions in the Greenway from 1990 to 2003

2002 – 2003 RECREATION AND HISTORY

- Issaquah Hatchery Environmental Education Center opened
- Issaquah area historic signs installed
- State Route 519 built with a Greenway trail linking the Seattle waterfront to I-90 bike trails
- Western terminus trailhead of the John Wayne Pioneer Trail built at Rattlesnake Lake
- Olmsted Centennial celebration connected historic greenways in Seattle to the Mountains to Sound Greenway
- Kittitas County “Anti-Mudding Campaign” won national Forest Service award

2002-2003 VOLUNTEERS AND EDUCATION

- Greenway summer program, Mountain Works, brought 100 young people out in the summer for camping, environmental education, and volunteer work to build trails on Rattlesnake Mountain and in the Middle Fork Valley
- Greenway volunteers planted 27,000 trees this year
- 3000 volunteers donated 14,000 hours to outdoor restoration projects in the Greenway
- Volunteers built or maintained Greenway trails on Mt. Si, Rattlesnake Mountain and the Middle Fork Snoqualmie River Valley
- Greenway tree nursery at Lake Sammamish State Park expanded to hold 20,000 native trees and shrubs
- Greenway Environmental Education program, Seeking Solutions, taught 3000 students this year in King County about the importance of recycling, salmon and wildlife, and keeping forests on the edge of the city, by means of in-class activities and field trips to Tiger Mountain State Forest.

2002 -2003 MAJOR DONORS

- Anonymous
- The Boeing Company
- Jim Ellis
- Tom and Jean Gibbs
- The Hugh and Jane Ferguson Foundation
- Microsoft Corporation
- Osberg Family Trust
- Puget Sound Energy
- William G. Reed, Jr.
- Recreational Equipment, Inc. (REI)
- Maryanne Tagney Jones and David Jones
- Weyerhaeuser Company Foundation



Volunteers build a new hiking bridge on Rattlesnake Mountain

**MOUNTAINS TO SOUND GREENWAY TRUST
INCOME EXPENSES
FOR FISCAL YEAR ENDING 6/30/03**

INCOME

Private Contributions	\$	324,391
Restricted Grants - Public / Private	\$	442,281
Promotional Sales & Interest	\$	23,491
TOTAL INCOME	\$	790,163

EXPENSES

Program Expenses	\$	574,056
Fundraising	\$	30,394
Management & General	\$	148,141
TOTAL EXPENSES	\$	752,591

